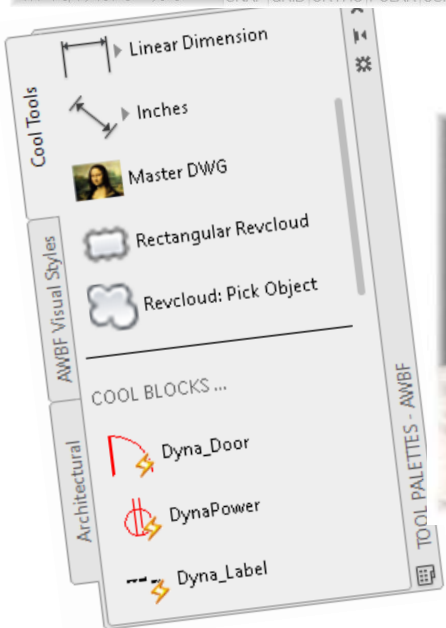


The AutoCAD® Workbench Final Edition

Tips & Insights for Maximizing your AutoCAD Productivity

A Compilation of AutoCAD Insights from 14 years of Michael's Corner & Hundreds of Hands-On Seminars



Written and compiled by
Michael E. Beall

Author, Speaker, and Award-Winning Instructor

Table of Contents

Chapter One: The User Interface

Toggle Your Window Back from Dual Screen	1
Startup Insights	1
Dock Layout Tabs Above the Status Bar	1
The Governing Body of Workspaces	2
Quick Access Toolbar [QAT]	2
Application Menu Tidbits	2
The Ribbon	3
Toolbars with the Ribbon	4
Partial Open + Partial Load	5
The Command Line	6
The Status Bar	7
Other User Interface Insights	8
Optimum Options	8
Template Fundamentals	15
Be Responsible: Think Ahead	16
Files of Importance When Upgrading	17
Got HELP? Use It!	18
'Places' For Quicker Access	18
Display Adjustments	18
'Sign Language': Cursor Badges	19
Clean Screen ... or Open a Drawing	20
Wheel Mouse Tidbits	20
Pan and Zoom Antiques	20
Navigation Bar	21
Model Space View Controls	21
Tiled Drawings and the Taskbar	22
Quick View Layout on the File Tabs	23
Need-To-Know Tech Tools	24
User Coordinate System Icon & Properties	25
Position the UCS Origin [2D]	26
Split Viewports in Model Space	27
Split the Split Viewports	28
Named Views	28

Custom View in Viewport Controls	30
Save the UCS by Name	30
Optimized Viewing of Your Drawing Info	31
Layer Properties Header Organization	32
Off vs. Freeze	32
Freeze Individual Layers with Layer Freeze	33
Layer Previous	34
Layer Isolate & Layer Lock	34
View Layers with Layer Walk	35
Create a Layer State in Layer States Manager	37
Layer State List ... or Checkerboard	38
To – or – From the Current Layer	38
Layer Translator	39
Merge Layers	40
Viewport Overrides for Layers	41
Assign a Linetype to a Layer	41
Assorted Layer Insights	42
Options for the Disappearing Drawing	43
What to do With Geometric Constraints	44
The /nologo Switch and a Shortcut Key	44
The System Variable Monitor	44
Drawing Information	45
How to Start a Metric Drawing	46

Chapter Two: Creating & Editing

The Lowly Rectangle	47
Graphic Rectangle Fit	48
Why a Closed Polyline	48
Variable Width Polylines	49
Blended Curves	49
Polar Tracking	50
Polar Tool Tip & Vector	50
User Increment Angles for Polar	50

Polar Coordinate Entry	51	Selection ‘Lasso’	74
Ortho Shift	51	Select Similar	74
Drawing in Surveyor’s Units	51	Hide & Isolate Objects	74
Snap From	52	Quick Properties vs. Properties	75
Move with a Displacement	52	Linetype Tweaks	76
Object Snap Tracking	53	LTSCALE (Lyn’ Type Scale)	76
Otrack with Direct Distance Entry	54	Measurements	77
Snap to Perpendicular	54	Find the 2D Distance Between 3D Points	78
Midpoint Between Two Points [M2P]	54	Cycle Through Stacked Objects	79
Snapang Setting	55	Draw Order	79
Hatch Creation Tab	55	SETBYLAYER	80
Hatch Applications	57	Do U, OOPS, or UNDO?	80
Download and Install Custom Hatch Patterns	59	The ‘Multiple’ Modifier	81
Gradient Hatch	60	Rotate to Parallel	82
Hatch Transparency & Hatch Order	60	Customize Ortho with Snapang	82
Variable Controlling the Hatch Boundary	61	Rotate with the Copy Option	83
Snap to Hatch Patterns	61	Extend along Odd Angles	83
Add Batt Insulation to Walls ... as a Linetype	61	Align	83
Super (User-Defined) Hatch	62	Lengthen	84
Boundary Creation	63	Move and Copy With ‘CTRL’	85
Quick and Easy Parallel Lines with Dline	63	Copy with a Basepoint	85
Create a Door Opening with Dline	64	Paste to Original Coordinates	86
Revision Cloud	65	‘Single’ Option for Copy	86
Group Toggle Notice	66	Scale With ‘Reference’	87
The Doughnut/Donut	66	Rotate With ‘Reference’	87
Edit Polylines	67	Rotate Using Properties	88
Add a Vertex to a Polyline	67	Stretch	88
Add an Arc to a Polyline	68	Delete Duplicate Objects [Overkill]	89
Offset Corners & Options	68	Create an Associative Rectangular Array	89
Offset with the Layer Option	69	Edit a Source Object in an Array	90
Preview Feature for Fillets and Chamfers	69	Create an Array Along a Path	91
Fast Fillets on Polylines	70	Subdivide Your Linework	91
The JOIN Command	70	Trim & Extend	92
Need-To-Know Variables	71	The Old ‘Cookie Cutter Trim’: EXTRIM	93
Select the Right Stuff	73	Uses for the Wipeout Object	94
When Picking ‘Air’ isn’t Working	73	The Lost Art of Grips	95

That 'DYNMODE' Button	98
Come to Terms with Blocks	98
How to Create a Block	99
The Insert Command	100
The Block 'Ribbon Gallery'	100
Change the Insertion Point of a Block	101
Wblock [Write Block]	101
Block to .DWG with Wblock	102
Grab a Block with the Insert Osnap	102
Bcount [Block Count]	103
External Reference [XREF] Mechanics	103
Attach an Xref	104
Manage Xrefs	105
Edit the Reference Drawing	106
Xref Layer Insights	107
Xclip Update	108
Key Features of eTransmit	109
Reference Manager to Update Xref Paths	110
Dynamic Blocks: An Introduction	111
Dynamic Blocks: Visibility Parameters	111
Add Another Block as a Visibility Parameter	112
Dynamic Blocks: Alignment Parameters	113
Dynamic Blocks: Two-Directional Stretch	114
Dynamic Blocks: Add a Rotation Parameter	115
Use the Block Editor to Redefine Blocks	116
Considerations Regarding Blocks	116
DesignCenter Review	116
Autodesk Seek	118
Attach and Scale a .PDF Underlay	118
.PDF Drivers and Layer Visibility	120
.PDF Import	120
EXPRESS Tools: MoCoRo	123
EXPRESS Tools: Break-Line Symbol	123
EXPRESS Tools: Replace Block	124
EXPRESS Tools: System Variables Editor	125
Purge	125
AEC_WALLS	125
Drawing Alerts	126

Chapter Three: Annotation & Dimensioning

Raster Image Mechanics	131
Raster Image Cropping	132
Raster Image Display	133
For an Image That's Path-Free – OLE!	133
Create a Text Style	134
Text Justification	135
Text Editor Settings	136
Special Text Characters	136
Single-Line Text Strikethrough Character	136
Highlight Color for Text Objects	137
Text Frame on Mtext	137
Hexadecimal Code in Single-Line Text	137
Snap to Text	138
Select Objects with Width	138
Disabling Annotative Text	138
Multiline Text	139
Multiple Columns in Mtext	140
Mtext Line Spacing Factor	142
Word® Text Into Multiline Text	142
The Text Align Command	142
EXPRESS Tools: Convert Text to Mtext	143
EXPRESS Tools: Orient Text with TORIENT	144
EXPRESS Tools: Change Text Case [Tcase]	144
Stacking Fractions in Mtext	144
Quick Select with a Wildcard for Text	145
Quick Leader [Qleader]	145
Multileader	146
EXPRESS Tools: Text Mask	148
EXPRESS Tools: Enclose Text in Object	148
EXPRESS Tools: Arc-Aligned Text	149
Qtext for Mystery Dots	150
Find Annotation in the Drawing	151
BROWSER Command	152
Attribute Fundamentals	152
Edit Block Geometry 'In-Place'	155
Add a Multiline Attribute to an Existing Block	155

Edit Existing Attribute Definitions	157	Dimension Overall Scale	181
Edit the Attribute Definition Order	157	Dimension Text Height	182
The Block Attribute Manager [BATTMAN]	157	Associative Dimension Editing	182
Global Attribute Edit [GATTE]	159	Dimension Model Objects in Paper Space	183
Use Find and Replace for Attribute Editing	159		
Edit and Attribute Sans Editor	160	Chapter Four: Plotting & Layouts	
EXPRESS Tools: Explode Attributes with Burst	160	Convert Plot Styles	185
Extract Attribute Data	161	Layout Fundamentals	186
Create a Table Style	162	Viewports in a Layout	187
Insert and Edit a Table	163	Maximum Active Viewports	189
Tables and Excel® Files	165	Maximize Viewports	189
Coordinates from Excel into AutoCAD	166	Layout Tab Tidbits	189
Field Fundamentals	167	Viewports Dialog Box [Layout Tab]	190
Create a User-Defined Format for a Field	168	Estimating Plot Scale	190
Display Area Values with a Field	168	Rotate a Viewport	191
Drawing Properties in a Field	169	Irregular Shaped Viewports	191
Plot Scale in a Field	170	Transparent Layers in a Viewport	192
The 'CTAB' System Variable in a Field	170	Layer Transparency in Model Space	193
Create a Dimension Style	171	Lock a Viewport Display	193
Avoid Using 'Standard' in Text & Dim Styles	174	Copy and 'Peel' a Viewport	194
The DIM Command	174	Viewport Alignment with MVSETUP	194
Restore the Original Dimension Value	175	UCSFOLLOW and Viewports	195
Add Linear and Aligned Dimensions	175	Layouts from DesignCenter	195
Dimension Continue	176	Change Space	196
Angular Dimensions	176	Paper Space Linetype Scale	196
Dimension Grips	177	Create a Plot Style Table	196
Display Metric with Imperial Dimensions	177	RGB Color with Monochrome Plot Style	198
Dimension with Inches Only	178	Publish [Batch Plot]	198
Dimension with Text Only	178	Write and Read a .DWF	200
Dual Dimensions in a Dimension Style	179	Sheet Set Fundamentals	202
Add Text to a Dimension	179	Plot a Drawing to .PDF	203
Arc Dimensions	180	Plotting from Model Space	204
Move Dimension Text with Leader	180	Solution to Fat .PDF Lines	205
Dimension Box and Background	180	Plot to Raster Image	205
Aligned vs. Rotated Dimensions	181		
Background Mask on Dimension Text	181		

Chapter Five: Customizing AutoCAD

Customize User Interface [CUI]: An Intro	207	Palette Button: Revcloud from an Object	236
Customize the Quick Access Toolbar [QAT]	208	Palette Button: Automate the UCS Position	237
QAT Button: Create New Layer	209	Palette Button: Pushbutton Mtext	238
QAT Button: Duplicate for Edit Attributes	210	Palette Button: Dimensions	239
QAT Button: Favorite Osnaps	210	Palette Button: Plot Stamp Using a Field	239
QAT Button: Set a Standard Viewpoint	211	Palette Button: Blank Button	240
QAT Button: Reload all Xrefs	212	Palette Button: Linetypes in a Viewport	240
QAT Button: Load Linetypes	212	Palette Button: Double-Line	241
QAT Button: Drop-down Menu	213	Palette Button: Add an Image to a Button	242
QAT Button: Add Select Similar to the List	214	Palette Button: Node Snap	242
QAT Button: Zoom / .9X	214	Palette Button: M2P	243
QAT Button: Consistent Viewport Scale	215	Palette Button: Enclose Text in Object	243
Assign a Quick Access Toolbar to a Workspace	216	Palette Button: Favorite Settings	244
Transferring Your Quick Access Toolbar	217	Palette Button: Layout Tabs with Title Blocks	245
Float a Panel from the Ribbon	218	Lock a Tool Palette	246
Add a New Tab and a Panel to the Ribbon	218	Export a Tool Palette	247
Add Another Row to Your Panel	219	Change the Block Source File Globally	248
Copy a Default Panel to Your Custom Tab	220	Toggle Background Mask in Quick Properties	248
Add Rename to a Panel's Dialog Box Launcher	221	Find the Hatch Area in Quick Properties	249
Put the Firecracker Back on Explode!	221	Edit Rollover Tooltips	249
Add Another Dimension to the Dropdown	222	Change Ctrl + F to Find	250
Display Toolbars with the Ribbon	223	Change the F1 Key Assignment	250
Edit the Command Aliases	223	Add an Object Snap to a Function Key	251
Michael's Favorite Aliases	224	Add Mirror to Your Right-Click Menu	251
Add a Contextual Tab State for a Dimension	225	Edit the Plot Scales List for a Viewport	252
Export Your Custom Ribbon Using Transfer	226	Hyperlink Insights	252
Introduction to Tool Palettes	228	Use Rename For Named Objects	253
Palette Groups	229	Trusted Locations	254
Importance of the Palette Block Source File	230	Autodesk Exchange Apps / Apps Store	254
Blocks from DesignCenter on a Tool Palette	231	Repeat a Command in a Macro	255
Tool Properties for Blocks on a Palette	232	Lazy Lisp Fundamentals	255
Update Block Source Edits in the Drawing	233	Use the Startup Suite to Launch Lisp Routines	257
Palette Button: 'Pick Points' Hatch	234	More Lisp Routine Ideas	257
Palette Button: 'Select Objects' Hatch	234	Macro to Switch from Model to Paper Space	259
Palette Button: Rectangular Revision Cloud	235	Running a Script with One Click	260
		What's Best for Customizing?	261

Chapter Six: 3D Stuff		Appendix A: AutoCAD File Extensions	291
3D-Specific Tabs & Panels	263	Appendix B: Control & Function Keys	293
3D Views & Viewport Controls	263	Appendix C: Left Field Compilation	295
The Orbits	264	Appendix D: Instructions for Downloads	309
The View Cube	265	Index	313
The User Coordinate System [UCS] in 3D	266		
UCS [User Coordinate System] Icon Properties	267		
Region	268		
Using Presspull to Create 3D from 2D	269		
Dynamic UCS [DUCS]	270		
3D Editing Gizmos	271		
Isolines or Facetres?	272		
Sweeping a Shape Around a Polyline	272		
Apply a Chamfer to a 3D Solid	273		
Subtract + Union	274		
Surface Modeling Fundamentals	274		
Create 3D Surface Objects	274		
Create Curved Surfaces	275		
Visual Style Review	276		
The Visual Style Panel & Gallery	277		
Create a Style with the Visual Style Manager	278		
Visual Style Properties	279		
Visual Style Application	281		
3D Clip and a Named View	281		
Apply Materials to Surfaces and Solids	283		
Importing Materials	284		
Loading Materials	284		
Lights and Shadows	286		
Add Dimensions to a 3D Object & Add Text	287		
Viewports Dialog Box [Layout Tab]	288		
Using Shell and Slice to Create Hollow Forms	288		
Using Loft to Create Curved Surfaces	289		

INDEX

@	47	Attribute manager, [BATTMAN]	157
3D clip	281	Attribute, edit definition order	157
3D gizmos	271	Attribute, extracting data	161
3D dimensions	287	Attribute, multiline	155
3D solids, apply materials	283	Attributes, explode to text (Express Tools)	160
3D solids, from Presspull	269	AutoCAD Architecture, walls/doors from	125
3D surfaces	274	AutoCAD control keys & function keys	<i>APX B</i>
3D surfaces, curved	275	AutoCAD settings, export	16
3D surfaces, fundamentals	274	AutoCAD-related file extensions	<i>APX A</i>
3D user coordinate system [UCS]	266	Autodesk App store	254
ACAD.PGP, editing aliases in	223	Autodesk Design Review	200
ACAD.PGP, support file search path for	24	Autodesk DWG TrueView	200
Administrator, Run as	24	Autodesk Exchange apps	254
AEC_Walls	125	Autodesk Seek	121
Aliases, for commands	223	Automatic save file location	9
Aliases, Michael's favorites	223	Background, show in the Mtext Editor	139
Align objects	83	Background, in a dimension text box	180
Align viewports	194	Background mask, toggle in Quick Properties	248
Aligned dimensions	175	Background mask for mtext	140
Alignment parameters, dynamic block	113	Badges, cursor icons	19
All, selection method	73	Basepoint, copy with	85
Angle, polar settings	48	Batch plot [PUBLISH]	198
Angled wall, working with	26	Batt insulation, as a linetype	61
Annotation, find in a drawing	151	BATTMAN, Block Attribute Manager	157
Annotative text, disabling	138	BCOUNT, block count	103
Apostrophe ('), used in nested commands	212	Blank button on a tool palette	242
Application menu, 'scarlet letter'	2	Blend curves	49
Arc, added to a Polyline	68	Block, create	99
Arc-Aligned text, (Express Tools)	149	Block, double-click	116
Arc dimensions	180	Block, edit 'in-place' with Refedit	155
Area calculations using measure	77	Block, edit with the Block Editor	116
Area values from a field	168	Block, insert	100
Area from a hatch, in quick properties	249	Block, source file for a tool palette	222
Array, adjust spacing of associative	89	Block attribute manager [BATTMAN]	158
Array, along a path	91	Block count [BCOUNT]	104
Array, associative rectangular	89	Block editor	118
Array, edit the source object of	91	Block image, update image on tool palette	233
Array, linear created with grips	97	Block properties, on a Tool Palette	232
Array, polar created with grips	97	Block replace, (Express Tools)	124
Assign a linetype to a layer	41	Block source file update, global	248
Associative dimension editing	182	Block terms	98
Attach a .PDF underlay	118	Blocks from DesignCenter, on a tool palette	231
Attach an external reference [Xref]	104	Boundary creation	63
Attribute fundamentals	152	Break-line symbol, (Express Tools)	123

Browser , launched from within AutoCAD	152	Defpoints , layer	177
BURST , explode attributes (Express Tools)	160	DesignCenter , layouts from	195
ByLayer , use SETBYLAYER to modify	80	DesignCenter , search from	117
Chamfer , on a 3D solid	237	DesignCenter blocks	231
Change Space	196	DesignCenter review	116
Change Text Case , (Express Tools)	144	Dialog box launcher , customizing	221
Clip , 3D	281	Dialog box variables for Open and Save	72
Clip , image	132	DIM command	174
Clip , viewport	191	Dimension 3D objects	287
CMDDIA	72	Dimension contextual tab , customized	225
Color , use SETBYLAYER to modify	80	Dimension dropdown button , customizing	222
Color scheme , of Ribbon	9	Dimension grips	96
Command aliases , editing	223	Dimension model objects in paper space	183
Command line	6	Dimension style , create	171
Constraints , deleting geometric	44	Dimension text background	180
Contextual tab for dimensions , create	225	Dimension text height	182
Convert PDF underlay to polylines	121	Dimension on a tool palette	239
Convert plot styles , [CONVERTPSTYLES]	183	Dimension , add text to	179
Convert pline to an arc	68	Dimension , aligned	175
Convert text to mtext (Express Tools)	143	Dimension , aligned vs. rotated	181
Copy , option for Single	86	Dimension , arc	180
Cookie cutter trim [EXTRIM]	93	Dimension , editing associative	182
Coordinate entry , polar	51	Dimension , boxed	180
Coordinates from Excel , bring into AutoCAD	166	Dimension , continue	176
Copy with basepoint	85	Dimension , feet & inches and inches	179
Copy with CTRL key	85	Dimension , inches only	178
Count blocks [BCOUNT]	103	Dimension , linear	175
Cpolygon , selection option	73	Dimension , metric	177
Crop a raster image	132	Dimension , move with leader	180
Crossing polygon [CP], selection method	73	Dimension , original value	175
CTAB variable , current layout tab name	170	Dimension , overall scale of dim features	181
CUI [Customize User Interface]	207	Dimension , rotated	181
CUI , exporting custom content using	226	Dimension , text only	178
CUI , partial customization files	218	Direct distance entry , with Otrack	54
Current layer , make and change to	38	Disappearing cursor	19
Cursor badge , icons	19	Disappearing objects	43
Curves , blend	49	Display Adjustments	18
Custom hatch patterns	59	Distance , between 3D points	78
Custom panel , create	218	Distance , option of Measuregeom	77
Custom tab , create	218	Divide command , with points	92
Custom tab , export	218	Dline fundamentals	63
Custom tab , with default AutoCAD panel	220	Dline on a tool palette button	241
Customize dialog box , for tool palettes	247	Dline , create a door open with	64
Customize User Interface [CUI]	207	Docked command line ,	6
Data link , for Excel files	165	Dock layout tabs above status bar	1
Definition , attribute	152	Door opening created with dline	64
Definition point , defpoint layer	177	Donut/Doughnut ,	66

Draw order	79	F1, change assignment to ESC	250
Drawing alerts	126	Facetres variable for 3D	272
Drawing information, optimized viewing	45	Fade variable for Xrefs	9
Drawing properties in a field	169	Fence, selection method	73
Drawing recovery manager	10	Field Fundamentals	167
Drawings, quick view	23	Field, 'ctab' variable for current layout	170
Dual dimensions	179	Field, display area values	168
Dual screen, toggle to single screen monitor	1	Field, drawing properties from	169
DUCS, dynamic UCS	270	Field, plot scale in	170
Duplicate objects, delete with Overkill	87	Field, user-defined date format	168
DWF, writing and reading	200	FILEDIA variable for Open and Save dialogs	71
DYNMODE button	98	Files of importance, upgrading	17
Dynamic block alignment parameters	113	Fill-Related variables, for fonts and hatches	72
Dynamic block grips	96	Fillets on polylines	70
Dynamic block introduction	111	Find command, to find text in a drawing	151
Dynamic block rotation parameter	115	Fractions, stacking in mtext	144
Dynamic block two-direction stretch	114	Frame, on mtext	137
Dynamic block visibility parameters	111	Freeze layers	33
Dynamic UCS [DUCS]	270	Full path in title bar, drawing path and filename	3
Edit 3D objects, using a 3D Gizmo	271	Full screen workspace	18
Edit attribute definition order	157	GALLERYVIEW, Ribbon	100
Edit the AutoCAD 'Start In' folder	24	Gizmo, 3D editing	271
Edit the default plot scale list	252	Global attribute edit [GATTE]	159
Edit polylines	67	Gradient hatch	60
Edit shortcut menu assignments	251	Grips, overview	95
Editor, attribute [BATMAN]	157	Grips, dimension	177
Editor, system variable (Express Tools)	124	Group toggle	66
Enclose text in object, (Express Tools)	148	Hatch area in quick properties, customizing	249
eTransmit, when sending Xrefs	109	Hatch boundary variable, PICKSTYLE	66
Excel data in a table	165	Hatch creation tab	55
Excel, coordinates from	166	Hatch options	56
Explode attributes to text, (Express Tools)	160	Hatch origin	57
Explode command icon, customizing	221	Hatch on a tool palette button	234
Export AutoCAD settings	16	Hatch transparency	57
Export, custom tab from the Ribbon	226	Hatch, gradient	60
Export, tool palette	247	Hatch, ignore when snapping	61
Express Tools, arc-aligned text	149	Hatch, island detection	57
Express Tools, block replace	124	Hatch, order of	60
Express Tools, break-line symbol	123	Hatch, selected object	58
Express Tools, enclose text in object	148	Hatch, separate	58
Express Tools, moco	123	Hatch, user-defined superhatch	62
Express Tools, system variable editor	124	Help	18
Express Tools, text mask	148	Hide objects	74
Extend Existing Geometry	92	Hot Keys, aka alias / shortcut keys	223
Extend, along odd angles	83	Hot Key, launch AutoCAD	44
Extension, object snap feature	83	Hyperlink	252
Extract Attribute Data from Drawings	161	Image, Object Linking and Embedding [OLE]	133

Insert , object snap option	102	Lock layers	35
Insert a block	100	Lock tool palettes	246
Irregular shaped viewports	191	Lock viewports	193
Isolate layers	34	Loft command , create 3D surfaces with	289
Isolate objects	74	LSP , fundamentals of	255
ISOLINES	272	M2P , midpoint between 2 points	54
Join command	70	M2P , on a tool palette button	243
Last , selection method	73	Materials , loading and importing	283
Layer , assorted insights	42	Maximize a viewport	189
Layer , assign a linetype	41	Maximum active viewports setting	189
Layer , delete by name	43	Measure area	77
Layer , delete by selection	43	Measure command , with points	92
Layer , freezing	33	Measure distance	77
Layer , isolate	34	Metric dimensions , display	177
Layer , lock	34	Metric drawing , start	46
Layer , merge	40	Mirror command , added to the right-click menu	251
Layer , off vs. freeze	32	MoCoRo , MoveCopyRotate (Express Tools)	123
Layer , previous	33	Move , pick and drag; with CTRL	85
Layer , properties set by	80	Mouse , insights to the wheel	20
Layer , transparent	192	Multileader	146
Layer filters and evaluations	71	Multiple modifier , repeat commands in a macro	81
Layer properties , header organization	32	Multiple viewports in model space	27
Layer overrides , in a viewport; color	41	Multiline attribute , added to existing	155
Layer states from layer walk	36	Multiline text fundamentals	139
Layer states manager	37	Multiline text line space factor	142
Layer states , export and import	38	Multiline text , on a palette button	238
Layer translator	39	Multiline text , convert from single-line (Express)	143
Layer walk	35	Multiline text , multiple columns	140
Layouts from DesignCenter	195	MVSETUP , to create multiple viewports	194
Layout fundamentals	186	Named objects , Rename	253
Layout tab tidbits	189	Named view	28
Layout tabs , on a palette button	245	Named view , 3D clip	281
Layouts , quick view	23	Named view , viewport control	282
Leaders , multileader	146	Nested , command	242
Leaders , qleader	145	Nested , objects in a block	155
Legacy variable settings	71	Nested , objects in Purge	125
Lengthen existing geometry	84	Nested , xref	104
Lights and shadows , in 3D	286	Node snap , on a palette button	242
Linetype , assign to a layer	41	Object isolation	74
Linetype , batt insulation	61	Object linking and embedding , OLE	133
Linetype scale , as a property	76	Object snap tracking	53
Linetype scale , in a viewport [PSLTSCALE]	196	Object snap , from	52
Linetype scale , on a palette button	240	Object snap , insert / insertion	102
Lisp , fundamentals	255	Object snap , node; on a palette button	242
Lisp , launched from the Startup Suite	249	Object snap , parallel	82
List drawings by access date	2	Object snap , perpendicular	54
List drawings in ordered list	2	Off , layers	32

Offset corner types	68	PDF underlay, attach and snap to	118
Offset, layer option	69	Perpendicular object snap	54
OLE, object linking and embedding	133	PICKSTYLE, for snapping to a hatch	66
Oops command	80	Places for quicker drawing access	18
Open a drawing	20	Plot scale, edit list	252
Options dialog box	8	Plot scale, estimating	190
Orient drawing using UCS	30	Plot scale associated with a field	170
Orient text, (Express Tools)	144	Plot style conversion [CONVERTPSTYLES]	185
Ortho, toggle with shift	51	Plot style table, create	196
OSMODE, favorite object snaps on a button	210	Plot to .PDF	203
Osnap override,	82	Plot to raster image, (JPG/PNG/TIF/BMP)	205
Osnap Z, distance between 3D points	78	Point objects, used with Divide/Measure	91
Otrack, used with direct distance entry	54	Point style	91
Overkill, delete duplicate objects	89	Polar array, created with grips	97
Overrides, for layer colors in a viewport	41	Polar coordinate entry	51
Palette button, add an image	242	Polar tracking	50
Palette button, blank button	240	Polar, additional angles	50
Palette button, dimensions	239	Polylines, add a vertex	67
Palette button, double line [Dline]	241	Polylines, closed	48
Palette button, enclose text in object	243	Polylines, editing	67
Palette button, favorite settings	236	Polylines, fillet	69
Palette button, field with drawing data	237	Polylines, variable width	49
Palette button, hatch with 'pick points'	234	Presspull	269
Palette button, hatch with 'select object'	234	Previous, layer condition	34
Palette button, layout tabs from a template	245	Previous, selection method	73
Palette button, M2P	243	Profiles	14
Palette button, mtext	238	Properties window	75
Palette button, node snap	242	Proxy objects	11
Palette button, rectangular revcloud	235	Psitscale	196
Palette button, revision cloud from object	236	Publish	198
Palette button, scale linetypes in a viewport	240	Purge	125
Palette button, UCS position automated	237	Pushpin a drawing	3
Palette groups	229	QAT, Quick Access Toolbar	2
Panels on the ribbon	4	QAT, customize	208
Paper space, fundamentals (Layout tab)	186	QAT button, consistent viewport scale	215
Paper space linetype scale [PSLTSCALE]	196	QAT button, create a new layer	209
Parallel lines created with Dline	63	QAT button, drop-down menu	213
Parallel object snap, to rotate objects	82	QAT button, edit attributes with DDATTE	210
Partial open / Partial load	5	QAT button, favorite osnaps	210
Paste to original coordinates	86	QAT button, load linetypes	212
Path, array	91	QAT button, reload all Xrefs	212
Path, Support File Search	8	QAT button, select similar drop-down	214
Path, sweep	272	QAT button, set a standard viewpoint	211
PDF, plot to	203	QAT button, zoom / .9x	214
PDF, solution to fat PDF lines	205	Qleader, quick leader	145
PDF drivers,	203		
PDF import,	120		

QTEXT Variable	43	Search drawing content using DesignCenter	117
Quick Access Toolbar , assign to a workspace	216	Search for variables , wildcard	72
Quick Access Toolbar , customizing	208	Selection cycling	78
Quick Access Toolbar , transfer to a .CUIX	217	Selection lasso	12
Quick properties , customized with hatch area	249	Select objects , hide	74
Quick properties , toggle background mask	248	Select objects , isolate	74
Quick properties window	75	Select objects , similar	73
Quick select , wildcard for text	144	Select objects , unisolate	74
Quick View drawings + Quick View layouts	23	Selection options	73
Raster images , cropping	132	Select similar	73
Raster images , definition	131	SETBYLAYER , modify object properties	80
Raster images , plot to	205	Shadows , in 3D	286
Recovery , drawing	10	Sheet set fundamentals	202
Rectangle , dimensionally accurate	47	Shell command , for 3D	288
Rectangle , graphically fit	48	Shift + pick , selection method to deselect	73
Rename named objects	253	Shortcut keys , change F1 key assignment	250
Redefine blocks , block editor to	116	Single line text hexadecimal code	137
Relative path for references , attachment	104	Single line text strikethrough	136
Refedit , edit blocks with	107	Slice command , for 3D	288
Reference , option for rotating & scaling	87	Snap from , object snap	52
Reference manager to update xref paths	110	Snap to hatch patterns	61
Region	268	Snap to parallel , to rotate	82
REMEMBERFOLDERS for startup	24	Snap to perpendicular	54
Replace block , (Express Tools)	124	Snapang setting	55
Revision cloud	65	Source file , blocks on a palette	230
Revision cloud , from an object; palette button	236	Special text characters	136
Revision cloud , modify	65	Splash screen , disable on AutoCAD launch	44
Revision cloud , rectangular; palette button	235	Stacking fractions , mtext	144
Revision cloud , on a palette button	236	Standard , avoid in dimension and text styles	174
RGB color , for layers	42	Startmode	1
Ribbon fundamentals	3	Startup	1
Ribbon , add a new tab and panel	218	Startup suite	257
Ribbon , add another row to the panel	219	Status bar	7
Ribbon gallery	100	Stretch existing geometry	88
Ribbon panel , floating	218	Strikethrough for single line text	136
Rollover tooltips , edit	249	Style , dimension	171
Rotate objects , with parallel osnap	82	Style , multileader	146
Rotate object , with properties	89	Style , plot	196
Rotate object , with reference	87	Style , table	162
Rotate a viewport	191	Style , text	134
Save a drawing using Wblock	101	Subdividing your linework , using points	91
Save a profile , .ARG	14	Subtract command , for 3D	274
Save a system variable file , .SVF	124	Super-Hatch , user-defined	62
Save a UCS by name	30	Surface modeling fundamentals	274
Save a view by name	28	Support file search path	8
Scale , linetype	42	Surveyor's units , draw with	51
Scale objects , with reference	87	Sweep command , for 3D	272

System variable , save to a file	124	Ucsfollow command , viewport property	195
System variables , wildcard search	72	Ucsicon command	25
System variable editor , (Express Tools)	124	Ucsicon selectable	25
Table , inserting and editing	163	Underlay a .PDF	118
Table , with Excel data	165	Underline Text	136
Table style	162	Undo command	80
Taskbar , to display individual drawings	22	Union command , for 3D	274
Technical settings	24	Unisolate layers	34
Text editor settings	136	Unisolate objects	74
Text frame	137	Units , metric with imperial in dimensions	177
Text justification	135	Units , surveyor's	51
Text mask , (Express Tools)	148	Units , template setting	15
Text style , create	134	Updating a workspace	4
Text , 3D view	287	Update a block from the source file	233
Text , added to a dimension	179	Upgrading AutoCAD , important files	17
Text , annotative disabling	138	User-defined hatch , SuperHatch	62
Text , arc-aligned (Express Tools)	149	Variables , dialog box display	72
Text , convert from mtext (Express Tools)	143	Variables , fill-related	71
Text , dimension background	181	Variables , need-to-know	71
Text , enclose in object (Express Tools)	148	Variables , save and restore system variables	124
Text , enclose in object on a tool palette	243	Version , important files when upgrading	17
Text , from attributes [BURST]	160	Vertex , add	67
Text , height for dimensions	182	View , named	28
Text , multiple column	140	View , named with 3D Clip	281
Text , orient with Torient	144	View cube	265
Text , snap to insertion	138	Viewpoint on a QAT button	211
Text , special characters	136	Viewport fundamentals	187
Tiled drawings	22	Viewport , copy and 'peel'	194
Tool palette block properties	224	Viewport , irregular shaped	191
Tool palette introduction	228	Viewport , lock the display	193
Tool palette , export	247	Viewport , maximize	189
Tool palette , importance of the block source file	230	Viewport , rotate	191
Tool palette , lock	246	Viewport , transparent layers in	192
Toolbars , displayed with the Ribbon	4	Viewport controls , model space	21
Tooltip , autoTrack setting for ortho & polar	11	Viewport overrides , layer property	41
Tracking , polar	50	Viewports alignment using MVSETUP	194
Transparent layers in a viewport	192	Viewports dialog box , Layout tab	288
Tray settings	7	Viewports , maximum active variable	189
Trim , 'Cookie Cutter Trim' [EXTRIM]	93	Viewports , split in model space	27
Trim existing geometry	92	Visibility parameters , dynamic block	111
Trusted locations	254	Visual Style , custom	278
U , single Undo	80	Visual style manager	278
UCS , automated position on a palette button	237	Visual style palette	280
UCS , saved by name	30	Visual style panel	277
UCS in 2D , position the UCS origin	26	Visual style properties	279
UCS icon properties	25	Visual style review	276

Walk, layer	35
Wblock, save block to a .DWG	102
Wblock, save selection to a .DWG	101
Wheel mouse	20
Wildcard system variable search	72
Window polygon [WP], selection method	73
Wipeout	94
WHOHAS, for 'Read Only' drawings	25
Workspace, export	226
Workspace fundamentals	2
Workspace, updating	4
Workspaces, quick access toolbar assigned	216
Wpolygon, selection method	73
Xclip update	108
X-Ray visual style, opacity slider	277
Xref mechanics	103
Xref, attach	104
Xref, bind	107
Xref, editing the reference drawing	106
Xref, eTransmit	109
Xref, layer insights	107
Xref, managing	105
Xref, overlay	105

The AutoCAD® Workbench

Final Edition

Tips & Insights for Maximizing your AutoCAD Productivity

A Compilation of AutoCAD Insights from 14 years of Michael's Corner & Hundreds of Hands-On Seminars

This Final Edition of *The AutoCAD® Workbench* has been updated to AutoCAD 2018. Compiled from 14 years of monthly articles from CADTutor's 'Michael's Corner', *The AutoCAD Workbench, Final Edition* is a collection of exercises, Gold Star tips, and topical insights with hundreds of figures and illustrations designed to make you more productive. Easy-to-follow "How-To" steps give you practical examples to guide you through a broad array of commands and applications. You have a life, *The AutoCAD Workbench* will help you get it back!

Comments from Happy Readers ...

*"Michael provides a **very comprehensive desktop reference** covering many years of **problem solving tips and advice** on how to **become more proficient** using AutoCAD. Keep this book near your desk as **it will motivate you** and provide you with the **answers and knowledge** you need to succeed. You have just made a great investment in developing **your technical skills** in AutoCAD."*

Sam Lucido – CAD Manager and popular AU Speaker.

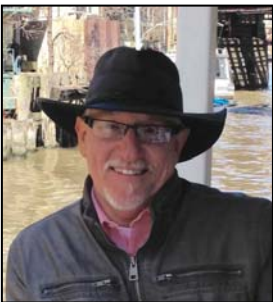
*"If you've had the pleasure of experiencing a training session with Michael, you know how **invaluable** his lessons are. If **not**, his books are the next best thing! **Easy-to-follow, easy-to-use and not dumbed down** in a way that makes you feel like you aren't 'getting' it. I love Michael's style and love his books! A definite '**must-have**' for **either the novice or veteran CAD user.**"*

Victoria B. – Senior Project Designer

*Michael Beall is **the** CAD Trainer Guy. He's been working with AutoCAD for as long as I can remember and he was instrumental in **developing my own understanding** of this wonderful software. For 14 years, he wrote **insightful and enlightening articles** for our users at CADTutor.net and this book is an update on all that fantastic work. I wholeheartedly recommend it to you*

*– this CAD Trainer Guy **really knows what he's talking about!***

David Watson, College Professor & Webmaster, www.CADTutor.net



Michael E. Beall is the owner of CAD Trainer Guy, LLC in Shelbyville, KY. He's still providing customized, hands-on, application-specific training on all versions of AutoCAD® and AutoCAD LT®, either on-site or via webinar.

Michael has been presenting CAD seminars to the A&D community, facility departments and the contract furniture industry since 1982 and on AutoCAD since 1990. A popular speaker, Michael has presented 'The AutoCAD Toolbelt' at numerous trade shows and for several years at Autodesk University. At AU 2013, he won the coveted 'Speaker Award' for his Hands-On Lab, 'Click My Ride: Customizing AutoCAD for How You Work'. **All of the content from his AU sessions are in this book.** Over the last 35 years he has trained on 6 continents, 11 countries, 41 states, and Guam.

As an Autodesk Authorized Author, he authored two volumes of Autodesk Official Training Courseware, and co-authored five titles published by New Riders Publishing, including the popular 'Inside AutoCAD' series.

Mr. Beall received his Bachelor of Architecture degree from the University of Cincinnati/DAA in 1978. For additional information on his current training seminars, visit his website, www.cadtrainerguy.com, where you will also find AutoCAD tips, downloads, and references. Additional AutoCAD insights can be found at the archive of Michael's Corner on CADTutor.net www.CADTutor.net/corner from which this book was inspired.

"If you have questions on AutoCAD or would like to inquire about my training seminars or speaking engagements, please feel free to contact me at michael.beall@cadtrainerguy.com."



AutoCAD® and AutoCAD LT® are registered trademarks of Autodesk®, Inc.

michael.beall@cadtrainerguy.com
www.cadtrainerguy.com